

Wildlife Camera Survey Report for 2015-2016



Cascade Forest Conservancy

INTRODUCTION

The wildlife camera surveys of 2015 and 2016 took place between May of 2015 and December of 2016. The work spanned from the Wind River watershed in the south part of the Gifford Pinchot National Forest to the foothills of Goat Rocks Wilderness in the north part of the national forest. Surveys were carried out by volunteer teams, citizen science trip participants, and students from Evergreen High School in Vancouver, WA and West Linn High School in Portland, OR. The surveys involved a total of 73 volunteers.

In addition to fostering stewardship and connecting students and community members to nature, wildlife, and their national forest, there were several ecological objectives of the project. The objectives were to document the potential return of wolves into the region, determine current distribution limits of martens, document species assemblages in distinct regions of the national forest, verify a regional bobcat distribution model, and lastly, to supply on-the-ground wildlife information for our partners. Our partners include the Gifford Pinchot National Forest (fs.usda.gov/giffordpinchot) and Wildlife Camera Network Northwest (wcnnw.org). Wildlife Camera Network Northwest is a collaboration of wildlife camera survey efforts in the Pacific Northwest and is focused on facilitating communication among survey projects, developing and streamlining survey methods and protocols, sharing camera-derived data, and developing broad-scale camera surveys in the region. The network serves as a national model for science-driven partnerships aimed at advancing wildlife conservation through valuable and efficient noninvasive research. Our partnership with the Gifford Pinchot National Forest is an important link between local forest managers, communities, and the non-profit sector. The coordination of mutual objectives and the sharing of data are integral elements of this partnership.

This report serves to inform our members and the public about the survey results and to transfer the information to partners, including the staff of the Gifford Pinchot National Forest.

METHODS

All camera sites were surveyed for at least 28 days in order to increase detection probabilities and decrease the likelihood of false absences. Cameras were set to take 3-5 photographs per movement detection, and a subset of the cameras were equipped with video capabilities. Gusto scent lure was used to attract wildlife and lure was reapplied approximately every two weeks.

PHOTOGRAPHS

To obtain jpegs of the survey photographs, contact our Conservation Science Director, Shiloh Halsey at shiloh@cascadeforest.org.



ONE-PAGE PROJECT SNAPSHOT

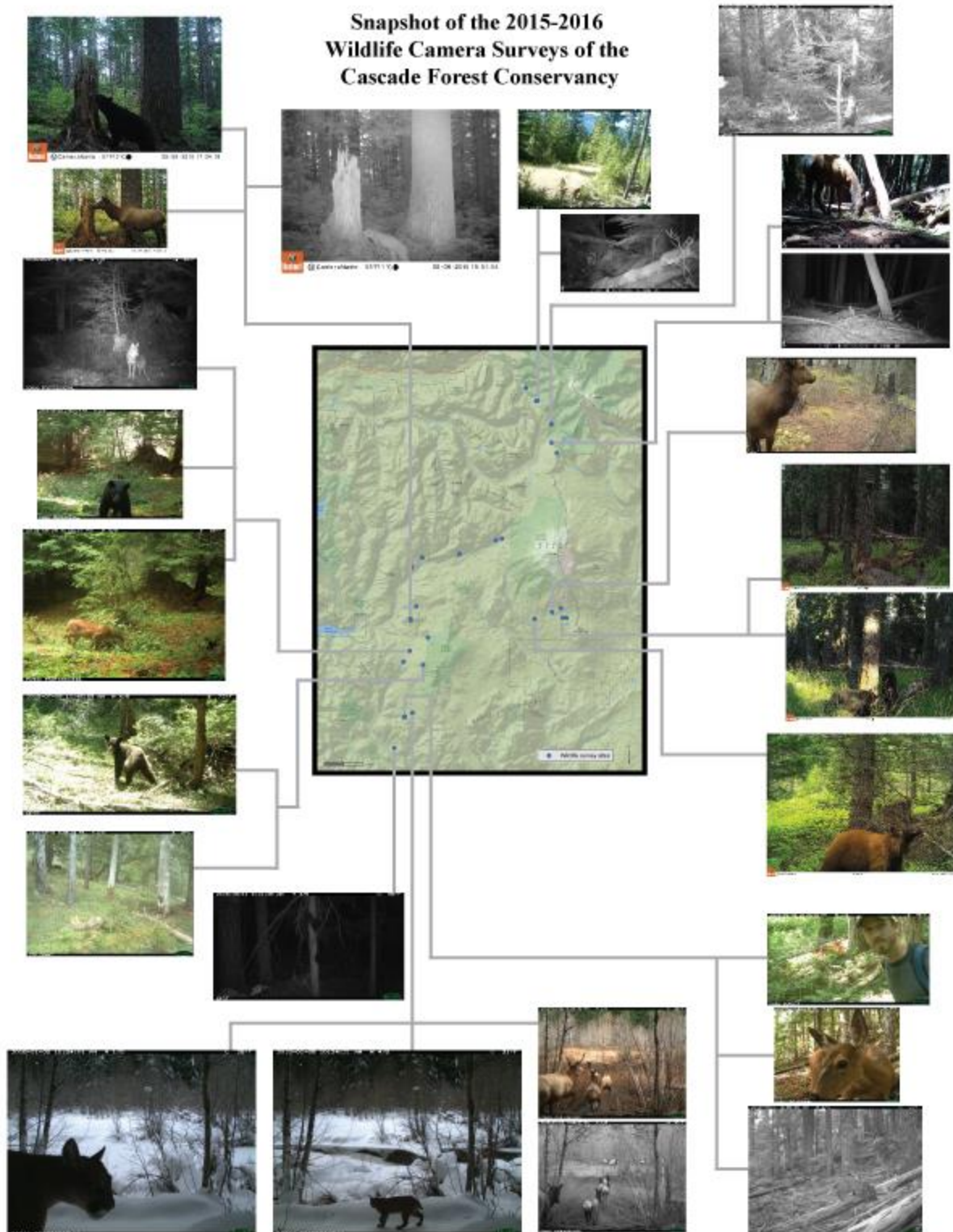


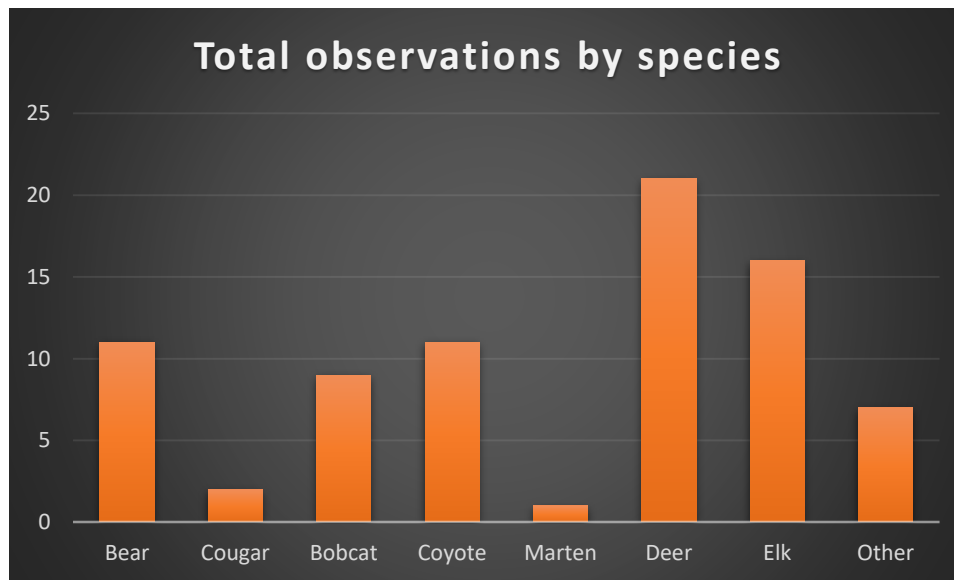
TABLE OF SURVEY RESULTS

ObjectID	Date_retrieve	Site	Lat	Long	Observations	Team	Notes	Bear	Cougar	Bobcat	Coyote	Marten	Deer	Elk	Other
1	6/27/2015	2	45.83658	-121.91345	bear, deer, coyote	GPS-YFF	Rd 60	1			1		1		
2	7/12/2015	9x	46.04312	-121.83081	bear-, deer	BWD		1					1		
3	7/13/2015	3x	46.07674	-121.87837	elk-	BWD								1	
4	7/14/2015	1x	46.10104	-121.86412	elk	BWD								1	
5	8/9/2015	11x	46.10248	-121.47753	camera burned	BWD	wildfire								
6	8/9/2015	13x	46.08474	-121.46188	elk, bear, deer, coyote-, porcupine, turkey-, cow	BWD	wildfire	1			1		1	1	1
7	8/11/2015	7x	46.1727	-121.87911	nothing	NJB									
8	8/11/2015	8x	45.99732	-121.89428	nothing	NJB									
9	8/11/2015	9x	45.9921	-121.84221	coyote, bear, deer-, elk-	NJB		1			1		1	1	
10	10/2/2015	3x	46.07486	-121.87833	bear, bobcat, deer, elk,	GPS	lone butte	1		1			1	1	
11	10/2/2015	7x	46.01727	-121.87911	deer, cougar, bear, coyote	GPS	mccllellan	1	1		1		1		
12	10/4/2015	9x	45.9921	-121.84221	bear	NJB	same site as aug	1							
13	11/2/2015	6	46.19113	-121.85133	nothing	BWD									
14	11/2/2015	7	46.19914	-121.75179	nothing	BWD									
15	11/2/2015	9	46.22964	-121.63884	nothing	BWD									
16	11/9/2015	4	45.89481	-121.88745	rabbit	NJB									1
17	11/9/2015	5	45.90286	-121.86721	nothing	NJB									
18	11/29/2015	6	46.19113	-121.85133	deer	BWD							1		
19	11/29/2015	9	46.22964	-121.63884	nothing	BWD									
20	12/4/2015	21	46.48648	-121.55053	marten	MS						1			
21	12/4/2015	22	46.50966	-121.58185	bobcat, deer-	MS				1			1		
22	12/15/2015	4	45.89481	-121.88745	elk, deer, squirrel	NJB							1	1	1
23	12/15/2015	5	45.90286	-121.86721	nothing	NJB									
24	3/1/2016	4	45.89481	-121.88745	nothing	NJB	check was later								
25	3/1/2016	5	45.90286	-121.86721	cougar, bobcat, elk-	NJB	check was later		1	1				1	
26	4/17/2016	6	46.19113	-121.85133	elk- (dozen)	BWD								1	
27	4/17/2016	8	46.22599	-121.65493	coyote-, bobcat	BWD				1	1				
28	6/4/2016	4	45.89481	-121.88745	nothing	NJB									
29	6/4/2016	5	45.90286	-121.86721	bobcat, elk, rabbit	NJB				1				1	1
30	7/11/2016	12	46.08174	-121.54667	bear, coyote, deer, elk	GPS-YFF	timber area site	1			1		1	1	
31	7/18/2016	6	46.19113	-121.85133	deer	BWD							1		
32	7/18/2016	8	46.22599	-121.65493	deer	BWD							1		
33	7/20/2016	6	46.19113	-121.85133	nothing	NJB									
34	7/20/2016	7	46.19914	-121.75179	nothing	NJB									
35	8/7/2016	20	46.44408	-121.51195	deer, coyote, bear	BWD		1			1		1		
36	8/7/2016	21	46.48648	-121.55053	nothing	BWD									
37	8/19/2016	6	46.19113	-121.85133	nothing	NJB									
38	8/19/2016	7	46.19914	-121.75179	nothing	NJB									
39	8/22/2016	20	46.44408	-121.51195	nothing	BWD									
40	8/22/2016	21	46.48648	-121.55053	nothing	BWD									
41	8/22/2016	18	46.39048	-121.49566	bear, coyote, elk, deer	MS		1			1		1	1	
42	8/22/2016	19	46.40944	-121.51053	rabbit, elk	MS								1	1
43	9/7/2016	20	46.44408	-121.51195	nothing	BWD									
44	9/7/2016	21	46.48648	-121.55053	elk (large bull)	BWD								1	
45	9/14/2016	8	46.22599	-121.65493	deer	NJB							1		
46	9/14/2016	9	46.22964	-121.63884	deer	NJB							1		
47	9/25/2016	20	46.44356	-121.51209	bobcat	BWD				1					
48	9/25/2016	21	46.48589	-121.55478	bobcat, deer-	BWD				1			1		
49	11/12/2016	13	46.09477	-121.50071	coyote, deer-, elk-, chipmunk	GPS	off burn trail				1		1	1	1
50	11/12/2016	14	46.0849	-121.47234	bobcat, bear, coyote, deer, elk	GPS	near fire area	1		1	1		1	1	
51	11/21/2016	4	45.89414	-121.88905	bobcat, coyote, deer-, elk-, squirrel	NJB	hill, started 9/14			1	1		1	1	1
52	11/21/2016	5	45.90282	-121.86771	deer	NJB	started 9/14						1		

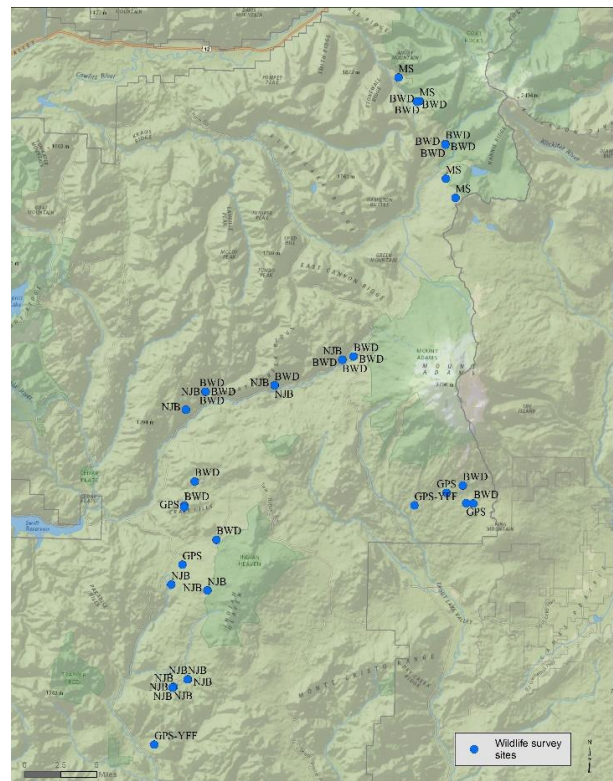
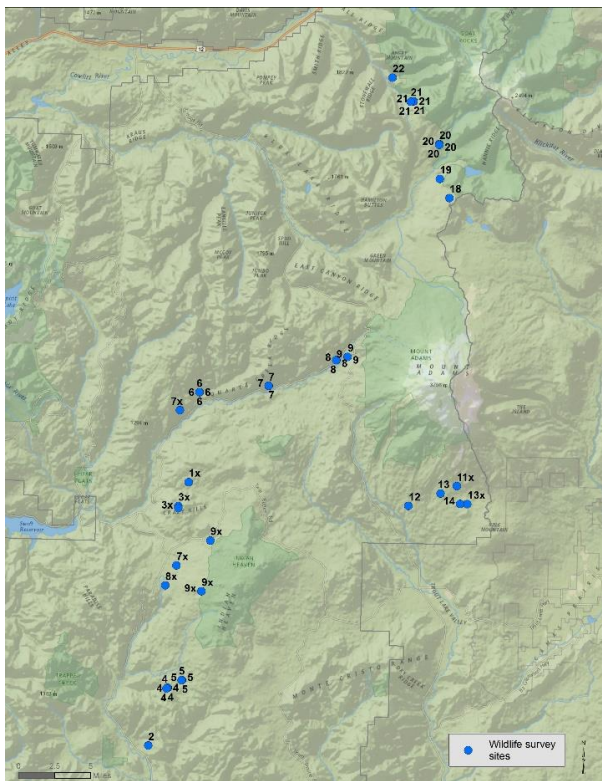
OBSERVATION TOTALS BY SPECIES

Bear	Cougar	Bobcat	Coyote	Marten	Deer	Elk	Other	
11	2	9	11	1	21	16	7	Totals

GRAPH OF OBSERVATION TOTALS



SITE NUMBERS AND TEAM LOCATIONS: (duplicate numbers and team names represent repeat visits)



FOCUS AREA MAPS WITH WILDLIFE OBSERVATIONS LISTED

