

2025 IMPACT **REPORT**



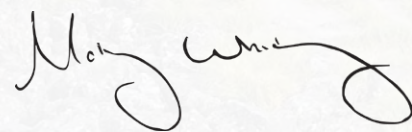
WELCOME TO CASCADE FOREST CONSERVANCY'S 2025 IMPACT REPORT

The updates that fill these pages cover projects and priorities spanning from meetings with officials in D.C. to weeks spent in the field collecting data and tackling restoration projects across the southern Washington Cascades. As a whole, the stories and statistics that follow tell the story of a community that deeply values the natural world coming together to work and fight for the landscapes they love.

CFC achieved many successes and overcame numerous challenges in 2025. We restored more aquatic habitat than ever before, protected thousands of acres of mature forest, and consistently met fundraising and project goals. All of this was accomplished despite considerable obstacles posed by the current administration. Starting with the mass firing of federal land management employees in January, the administration then put forward a steady stream of orders and rule changes designed to weaken environmental regulations and limit the public's ability to hold decision-makers accountable. These changes would undermine long-standing environmental safeguards and allow reckless logging and mining projects in areas of key wildlife habitat and much-loved backcountry.

In the face of these new threats, our staff and our incredible community stepped up in a big way. Thanks to our donors, volunteers, and partners, we continued to stand up for the people and landscapes of southwest Washington. I am particularly proud to report that in a time of growing division, Cascade Forest Conservancy strengthened relationships with partners, agency officials, Tribes, local communities, and even members of the logging industry. These relationships are among our strongest assets, at a time when many of the rules and regulations that help safeguard forests and watersheds are being scaled back significantly.

In the coming years, we will begin to see more on-the-ground consequences from decisions made in D.C. However, as this report shows, actions taken by our community through opposition, restoration, and embracing a shared admiration for our region allow us to remain committed to our mission and serve as a voice for the critters, communities, and ecosystems of our region.



Molly Whitney | Executive Director



Nature's best wetlands engineers

Our Beaver Program continued to grow, with a renewed focus on coexistence with beavers. While we were still available for relocations when needed, we're prioritizing helping people live harmoniously with beavers through education, tree protection, and mitigation devices. Alongside this work, we stepped up our advocacy efforts for beavers at the state level and continued to enhance aquatic habitat to encourage their return to our restoration sites.



LAST YEAR, CASCADE FOREST CONSERVANCY INSTALLED 52 **INSTREAM HABITAT STRUCTURES**, IMPROVED MORE THAN **3,200 FEET OF STREAM**, DELIVERED **600 LOGS** FOR PARTNERS' RIVER RESTORATION PROJECTS, AND PLANTED **2,500 RIPARIAN SHRUBS AND TREES**.

From the people living and working in the foothills of our region to the insects in the highest headwater streams, every form of life depends on healthy aquatic ecosystems. Plants, invertebrates, amphibians, fish, birds, and mammals all need functioning streams, riparian areas, and wetlands to survive and flourish.

WHAT MAKES HEALTHY WATERSHEDS?

In the Cascades, healthy watersheds are characterized by the presence of instream wood, beaver-engineered wetlands, healthy riparian forests, and diverse plant and animal communities. Instream wood provides many of the critical habitat features of these watersheds by creating pools for fish and insects, connecting waterways to their floodplains, and regulating high and low flows. In the summer months, instream wood helps creeks retain water through the dry season and creates cooler and shadier habitat pockets essential for all types of species.

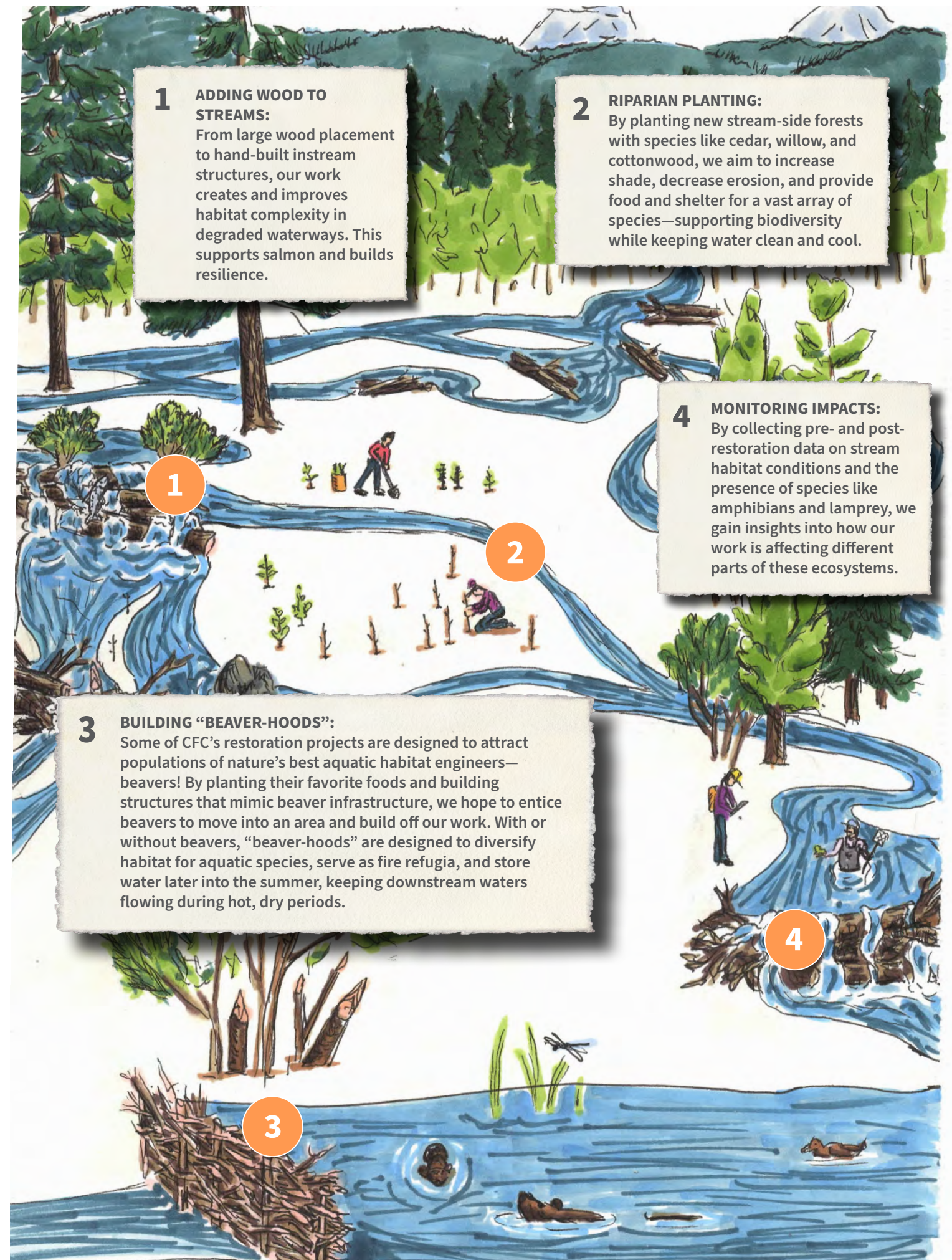
When these features are absent, aquatic systems suffer. In the summer, streams lacking wood and healthy riparian plant communities may become too warm for temperature-sensitive species such as salmon and other salmonids. Smaller tributaries that serve as important habitat for spawning and growing salmon

may even dry out completely. In winter and spring, high flow events from heavy precipitation and snowmelt are more likely to scour away the fine sediments and gravels needed by species such as salmon and lamprey.

HOW CFC IS RESTORING DEGRADED AQUATIC HABITAT

Many streams in our region have been degraded by a combination of factors, including dams, extensive logging, excessive beaver trapping, stream clearing for log transport, and stream channelization. As a result, many streams now lack the diverse habitats needed to support thriving aquatic communities and are less resilient to the confounding impacts of climate change.

To help restore degraded waterways in the southern Cascades, Cascade Forest Conservancy works with partners and volunteers to return wood and complexity to streams and rebuild healthy aquatic and riparian habitats. We are experienced aquatic habitat restoration professionals, and by working alongside wonderful partner organizations and volunteers, we restored more aquatic and riparian habitat in 2025 than ever before!



1 ADDING WOOD TO STREAMS:
From large wood placement to hand-built instream structures, our work creates and improves habitat complexity in degraded waterways. This supports salmon and builds resilience.

2 RIPARIAN PLANTING:
By planting new stream-side forests with species like cedar, willow, and cottonwood, we aim to increase shade, decrease erosion, and provide food and shelter for a vast array of species—supporting biodiversity while keeping water clean and cool.

3 BUILDING "BEAVER-HOODS":
Some of CFC's restoration projects are designed to attract populations of nature's best aquatic habitat engineers—beavers! By planting their favorite foods and building structures that mimic beaver infrastructure, we hope to entice beavers to move into an area and build off our work. With or without beavers, "beaver-hoods" are designed to diversify habitat for aquatic species, serve as fire refugia, and store water later into the summer, keeping downstream waters flowing during hot, dry periods.

4 MONITORING IMPACTS:
By collecting pre- and post-restoration data on stream habitat conditions and the presence of species like amphibians and lamprey, we gain insights into how our work is affecting different parts of these ecosystems.

3

4

IN 2025, THE **HEALTH AND INTEGRITY** OF OUR **PUBLIC LANDS** WERE UNDER **CONSTANT ATTACK**. CASCADE FOREST CONSERVANCY **STEPPED UP** TO PROTECT **LOCAL LANDSCAPES** AND KEEP OUR COMMUNITIES **INFORMED** AND **EMPOWERED**.

First, there was a mass firing of federal land management employees. Soon after followed a series of executive orders, emergency declarations, and rule changes that aim to ramp up the speed and scale of mining and logging by rolling back environmental protections, limiting public input, and weakening the ability of local communities to hold decision makers accountable. One Senate bill went so far as to propose selling off public lands to private interests.

EFFECTIVE ADVOCACY AT A CRITICAL MOMENT

Cascade Forest Conservancy is the only non-profit organization focused entirely on defending and restoring ecosystems in the southern Washington Cascades. We advocate on behalf of thousands of community members and supporters who want laws and land management actions to preserve and enhance the integrity of their public lands—not policies that maximize extraction and corporate profits by whatever means necessary. That’s a responsibility we take seriously.

Despite actions taken by the federal government in 2025, we remained well-positioned to challenge and mitigate the worst local impacts that could have resulted from this short-sighted thinking. We worked to decipher the implications of federal changes for local landscapes and provided you with clear and accurate information about what was happening and how you could engage. We pushed back against bad decisions whenever and however possible, and we worked with partners and land managers to mitigate the damage bad federal policy could cause to the landscapes we protect. Where we found success, we found it in large part due to relationships built on mutual respect and years of collaboration with individuals and local organizations representing a wide range of interests and perspectives.

LOCAL ACTIONS, LOCAL IMPACTS

While we kept an eye on news from D.C., we never lost focus on the landscapes, species, and communities in the southern Washington Cascades. In 2025, we strengthened relationships with our local, state, and federal elected officials amid growing division. Through formal comments and strategic negotiations, we protected thousands of acres of mature forests slated for harvest and made important progress toward achieving better land management practices for state and privately owned forest lands.

FROM TRAILHEADS TO CAPITOL HILL, WE SPOKE FOR PUBLIC LANDS AND FORESTS.

WE MOBILIZED PEOPLE-POWER!

Cascade Forest Conservancy kept a close eye on developments impacting our region, including carefully monitoring the decisions made by our local ranger districts, officials in Olympia, and in D.C.

We worked to provide information in emails, blogs, and social media posts that took you beyond alarmist headlines and provided in-depth, level-headed, and accurate information about how each issue could impact our region.

When there were opportunities for you to raise your voice and get involved in decisions impacting your forests and rivers, we published action alerts with clear instructions, background information, and talking points that made it possible to play a role in shaping decisions that matter to you.

WE MET WITH D.C. OFFICIALS



In June and October, CFC staff traveled to Washington, D.C. to meet with the staff of our elected representatives and agency officials. During those visits, we continued to advocate for permanent protections from mining for the Green River Valley and spoke up in support of protecting roadless areas like the Dark Divide. We also advocated for adequate funding and staffing for the Forest Service, a climate-focused update to the Northwest Forest Plan, funding and nonlethal solutions for beavers, and funds to support salmon recovery.

WE WORKED TO IMPROVE MANAGEMENT PRACTICES ON PRIVATE AND STATE-OWNED FOREST LANDS:

Although the national political climate was less than friendly to conservation causes in 2025, we made significant progress toward several important objectives that benefit forests on state and privately managed lands.

We voiced our support and spread the word about important rule changes that protect headwater streams from private timber harvest impacts, and we held meetings with Washington’s Commissioner of Public Lands, Dave Upthegrove, to discuss how the state can improve opportunities for the public to meaningfully and effectively participate in planning for timber sales and land management actions on state-managed forest lands.

FOREST COLLABORATIVES:

In 2025, through our participation in forest collaboratives, Cascade Forest Conservancy built and strengthened relationships with Forest Service officials, representatives of county, state, and Tribal governments and agencies, local community and business leaders, and representatives from the timber industry.

Forest collaboratives are organizations that bring together parties with a wide range of perspectives to discuss details of upcoming timber sales and land management actions. This forum allows us to present conservation concerns early in planning processes, when making changes is easier and more likely. Last year, CFC’s work in collaboratives protected thousands of acres of mature forest from harvest by influencing plans for the Little White Salmon timber sale. Through ongoing dialogue and negotiation, we are often able to improve the quality of actions taken on national forest land and reduce the need for slow and costly litigation.

CFC is a founding member and continues to serve in leadership roles in the two forest collaboratives that help guide decisions throughout the Gifford Pinchot National Forest: the Pinchot Partners, which focuses on actions impacting the Cowlitz Valley Ranger District, and the South Gifford Pinchot Collaborative, which participates in discussions about actions in the Mount Adams Ranger District.





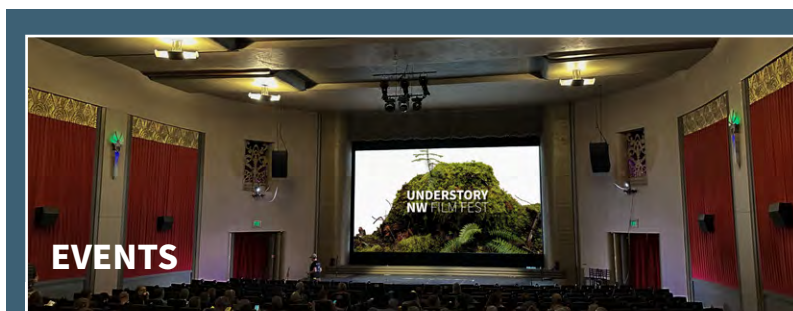
WE PROVIDED OUR **COMMUNITIES** WITH OPPORTUNITIES TO **CONNECT TO THE NATURAL WORLD** AND MAKE REAL, TANGIBLE **DIFFERENCES FOR WILDLIFE AND WILD PLACES** IN THE CASCADES.

Inspiring, informing, and empowering communities remained an important element of CFC's work in 2025. In addition to our community science and volunteer programs (see the following pages of this impact report), we provided an array of ways for anyone to get involved and make a difference for the landscapes we all care for.



DISCOVERY TEAM

- Cascade Forest Conservancy took the lead in restarting Discovery Team, a program that provides paid stewardship opportunities for students from White Pass High School.
- Our staff partnered with White Pass School District and specialists from the Forest Service to develop projects that were appropriate for youth participation and that introduced the students to the wide variety of work that occurs on the forest.
- Over the course of six weeks during the summer, the crew reinforced instream habitat structures, collected data for huckleberry management research, removed invasive species, cleared trails, built picnic tables, and removed waste from dispersed campsites.



EVENTS

- CFC's third annual UNDERSTORY NW FILM FEST brought our community together to enjoy an inspiring night of stories about our connections to the natural world at Vancouver's historic Kiggins Theatre. More than 200 people came out to celebrate conservation filmmakers and raise money to support CFC's advocacy and restoration work in the southern Washington Cascades.
- FOREST FEST is CFC's most important fundraising event of the year. In 2025, our friends and supporters came together to connect, play games, bid on unique raffle packages, and rock out to a performance by Portland's Sea Caves. Your generosity made 2025's event a huge success for ecosystems in our region!
- We helped organize and participated in the first FUNGI FEST, a three-day gathering hosted by the Pinchot Partners Forest Collaborative featuring talks, live music, foraging expeditions, and all things mushrooms!



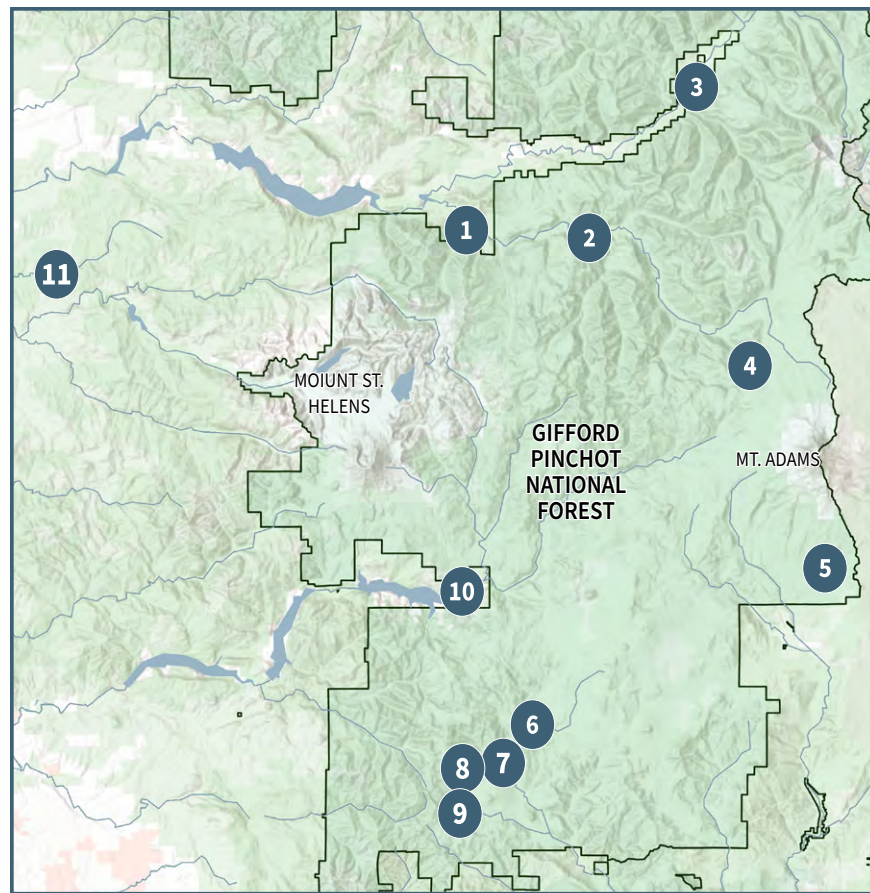
UPDATES & ACTION ALERTS

- Throughout 2025, Cascade Forest Conservancy provided accurate and in-depth information about local and federal actions impacting ecosystems in our region.
- We empowered our community to make a difference by sharing calls to action that included instructions and talking points that allowed anyone—regardless of their previous experience participating in public comment periods of letter writing campaigns—to make their voices heard in decision making processes.



NORTHWEST YOUTH CORPS

- In 2025, Cascade Forest Conservancy began a new partnership with Northwest Youth Corps (NYC), an AmeriCorps service program that connects young adults with natural resource work experiences.
- Over the course of several weeks in August and November, CFC guided the efforts of a NYC crew as they built instream structures and planted 900 trees and shrubs at Salmon Creek and Hall Creek.
- Our new partnership with NYC is mutually beneficial for CFC, crew members, and local ecosystems. By working together, CFC benefited from cost-effective labor and expanded the scope and scale of our low-tech process-based restoration efforts. NYC crew members gained experience with restoration fieldwork, which can inspire young adults to pursue related education and work opportunities. And of course, the biggest beneficiaries are the salmon, lamprey, and other critters whose habitats have been made healthier and more resilient.



SCIENCE & STEWARDSHIP VOLUNTEERS STUDIED AND RESTORED ECOSYSTEMS ACROSS THE SOUTHERN WASHINGTON CASCADES

CFC hosted 13 volunteer trips between March and November, engaging 55 volunteers who contributed 600 hours to science and stewardship projects in Gifford Pinchot National Forest and surrounding areas. Here's some of what they accomplished:

- Planted over 1,300 trees at 3 sites
- Protected 195 mature and old growth Douglas fir trees from Douglas fir beetles
- Collected seeds, fruits, and cuttings from 18 different plant species for future restoration plantings
- Performed adaptive management on 17 instream structures at 2 sites to improve spawning and rearing habitat for salmon
- Performed beaver habitat surveys at 10 sites and sampled macroinvertebrates at 4 sites.



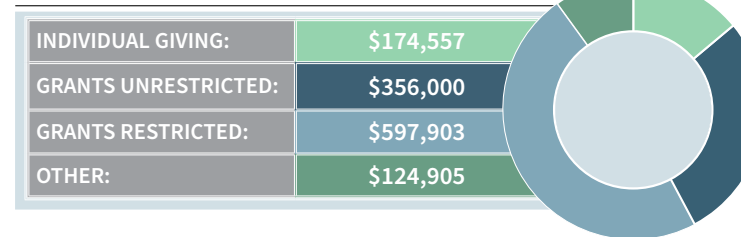
Clockwise from top left: 1. Volunteers gathered and planted willow and cottonwood stakes. 2. An ensatina salamander observed during an amphibian survey. 3. Staff and volunteers waded through Camp Creek to reach their project site. 4. We struck a pose with bags filled with invasive species removed from forests near Falls Creek Falls. 5. Volunteers helped build instream structures to improve salmon habitat. 6. We worked to protect old-growth Douglas fir trees from beetle infestations.

PROJECT SITE		IN 2025 VOLUNTEERS...
1	CRYSTAL CREEK	Planted live stakes and performed adaptive management on instream woody structures installed by CFC in 2024.
2	CAMP CREEK	Planted live stakes and salvaged native plants, surveyed for amphibians, and performed adaptive management on instream woody structures installed by the Forest Service in 2024.
3	HALL CREEK	Planted live stakes and native trees at a future instream restoration site.
4	HIGH LAKES	Performed beaver habitat assessments.
5	MT. ADAMS SNO-PARKS	Collected native seeds for a future restoration planting in the Triple Burn area near McDonald Ridge.
6	FALLS CREEK FALLS	Surveyed for invasive species in a recently harvested timber stand near the Falls Creek Falls trailhead.
7	GOVERNMENT MINERAL SPRINGS	Installed a pheromone repellent on old-growth trees to protect them from Douglas fir beetle infestations.
8	TROUT CREEK	Surveyed for macroinvertebrates at a future instream restoration site.
9	CRATER CREEK	Surveyed the creek for potential instream restoration work.
10	SWIFT CAMP CREEK	Surveyed for macroinvertebrates at an instream restoration site.
11	SALMON CREEK	Surveyed for macroinvertebrates at an instream restoration site.

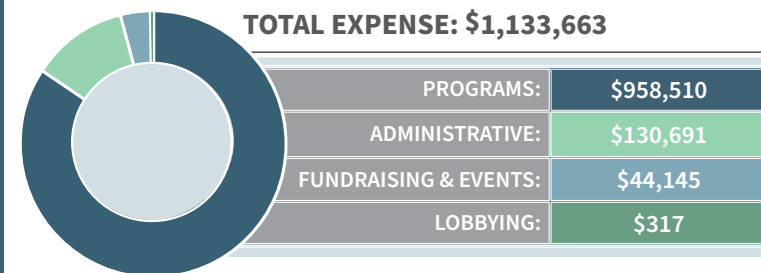
2025 FINANCES

Cascade Forest Conservancy continues to grow and remain financially sustainable. We are diversifying funding sources to scale with program growth and impacts. In 2025, our income exceeded our expenses, and we secured funding for projects to be completed in 2026, making 2025 an especially strong year. Thanks to our supporters, we continued to have the resources needed to defend and restore the Cascades.

TOTAL INCOME: \$1,253,365



TOTAL EXPENSE: \$1,133,663



OUR TEAM:

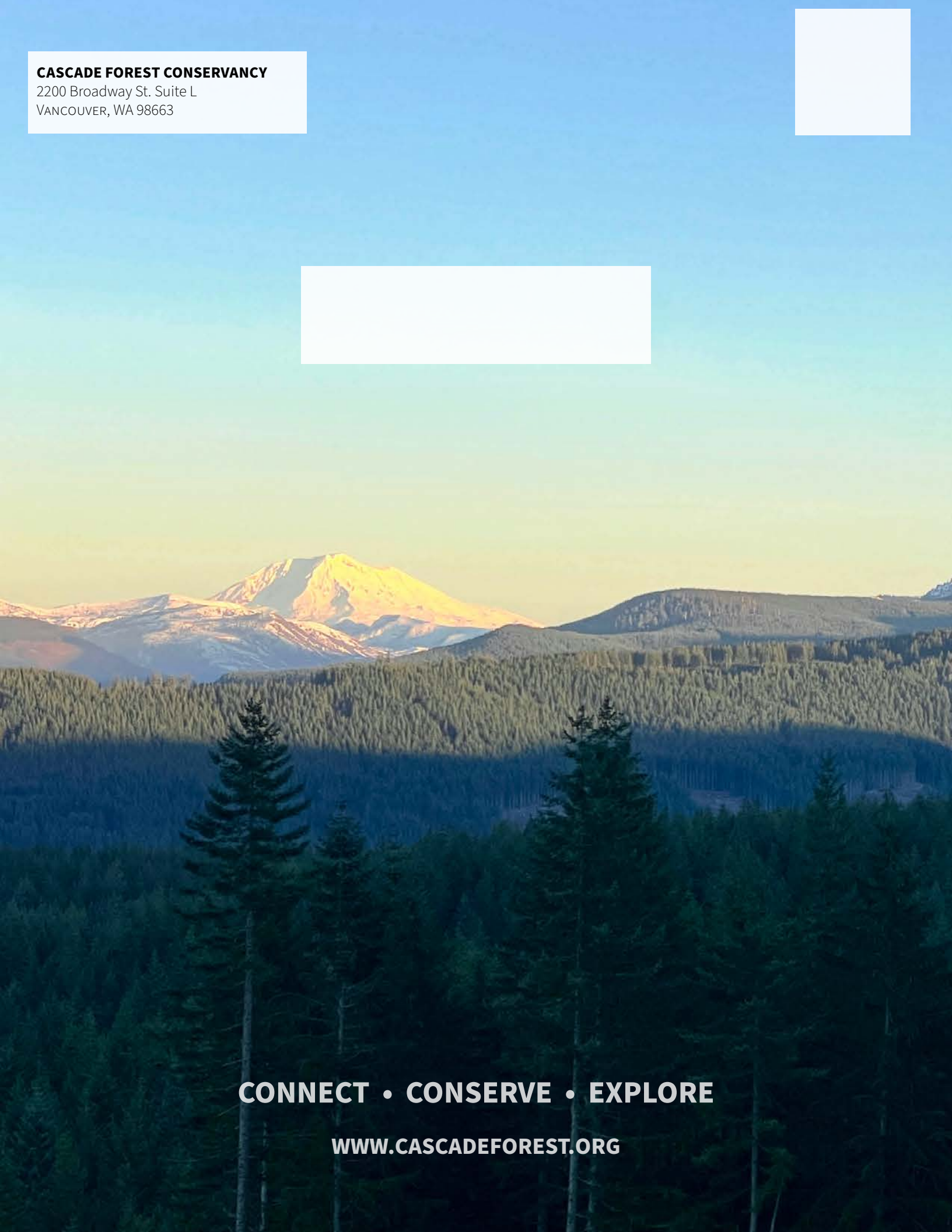
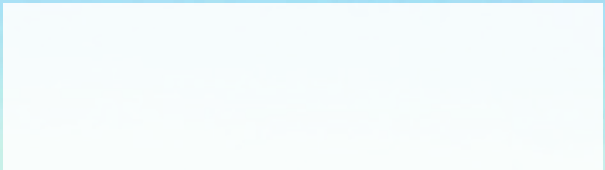
- Molly Whitney** | Executive Director
- Shiloh Halsey** | Director of Programs
- Ashley Short** | Policy Manager
- Amanda Keasberry** | Science & Stewardship Manager
- Suzanne Whitney** | Grants & Restoration Manager
- Katie Aiello** | Volunteer & Outreach Coordinator
- Bryn Gray Harding** | Communications Manager
- Mona Lindsey** | Accountant
- Mark Soutter** | Board Chair
- Susan Jane Brown** | Board Vice Chair
- Don Lloyd** | Board Treasurer
- Jennifer Gilden** | Board Secretary
- Nathan Reynolds** | Board Director
- Heather Godron** | Board Director
- John Miller** | Board Director
- Allen Poole** | Board Director
- Michael Sulis** | Board Director
- Bob Robison** | Board Director through Feb '26
- Kim Freeman** | Board Director as of Feb '26
- Matthew Tannenbaum** | Board Director as of Feb '26

SUPPORT OUR WORK: Cascade Forest Conservancy makes a difference for forests, streams, and wildlife because of people like you. Join us by becoming a sustaining monthly donor or giving a one-time gift today by using the remit envelope in this report or by visiting us online at www.cascadeforest.org/donate



CASCADE FOREST CONSERVANCY

2200 Broadway St. Suite L
VANCOUVER, WA 98663



CONNECT • CONSERVE • EXPLORE

WWW.CASCADEFOREST.ORG